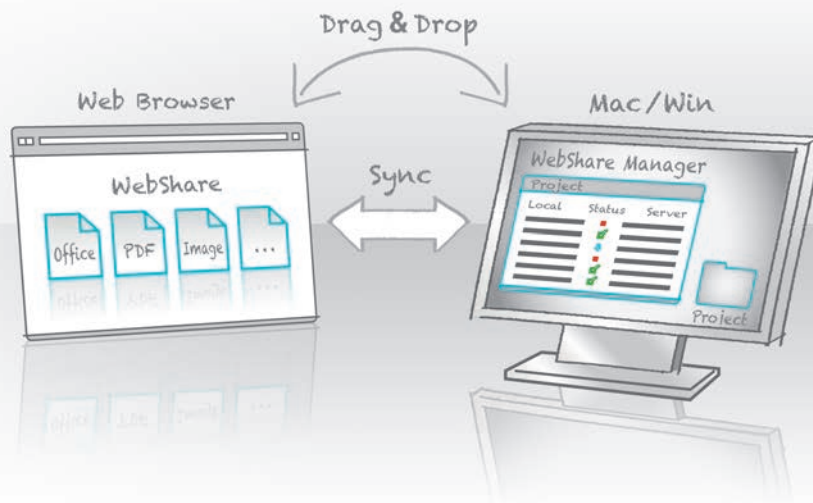
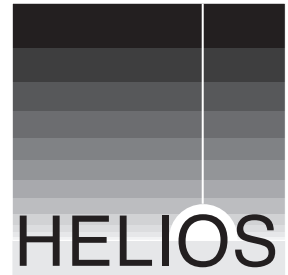


WebShare Manager UB64

Drag and Drop Synchronization for Files and Folders



WebShare Manager allows synchronizing files and folders between a WebShare server and remote workstations. Using a web browser, remote users can view server content in WebShare, and drag and drop files and folders between a WebShare sharepoint and the desktop for local use. Changes will be synchronized automatically.

Project Oriented Each WebShare Manager project is a bundle that references files anywhere on a WebShare server. This makes it easy to work with a group of files related to a project, even though those files might be scattered in many folders on the WebShare server.

Drag & Drop allows remote users to transfer files straight from WebShare into a WebShare Manager project folder on their local workstation. Likewise, users can drag local files into the project folder, and they will be uploaded to the WebShare server.

One-Way or Two-Way File Sync Each WebShare Manager project has a Synchronize Plan, to define how and when changes to the local and remote files get synchronized.

Optimized Transfers ensure that multiple files get transferred in parallel for better bandwidth utilization. In case a transfer gets interrupted, it will automatically resume when the network is up again. Large file transfers over 4 GB are supported.

No Cloud Copy of data because WebShare works directly with the company file server via its two-tier server solution. Enterprise users, groups and permissions are fully supported.

WebShare Manager is included as a core feature of HELIOS WebShare. See the WebShare data sheet for additional details and system requirements.

Features & Benefits

Ease of Use

- Native app for Mac and Windows
- Drag & drop file transfers
- Versatile file sync options

Client Features

- Sync files and folders
- Auto-resume of transfers
- Projects for grouping related files
- Color labels and file comment support allows updating their status

Server Features

- Enterprise grade security
- Secure user authentication
- Multi-user support
- Server file permissions support
- Versioning for uploaded files
- No cloud copy of data

Client Support

- Mac, Windows, UNIX

System Requirements

- WebShare File Server
- Java 6 or newer on client